



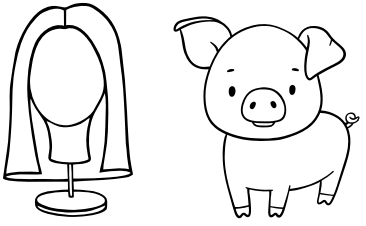
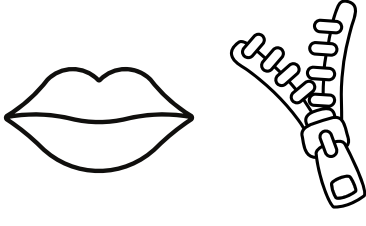
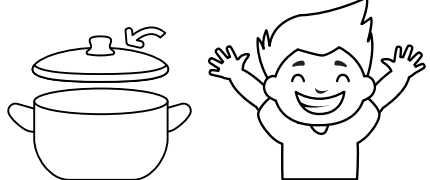

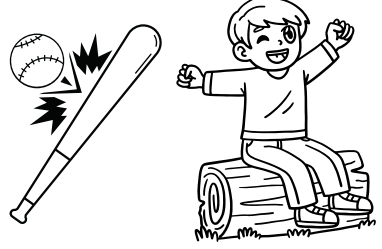
Name : \_\_\_\_\_

Class : \_\_\_\_\_

# READ, WRITE, & COLOR

**Short i**

Read the word in each box, write it on the line, then find and color the matching picture.

<p><b>pig</b></p>	<p>_____</p> <p>-----</p> <p>_____</p>	
<p><b>lip</b></p>	<p>_____</p> <p>-----</p> <p>_____</p>	
<p><b>kid</b></p>	<p>_____</p> <p>-----</p> <p>_____</p>	
<p><b>fin</b></p>	<p>_____</p> <p>-----</p> <p>_____</p>	
<p><b>sit</b></p>	<p>_____</p> <p>-----</p> <p>_____</p>	



Name : \_\_\_\_\_

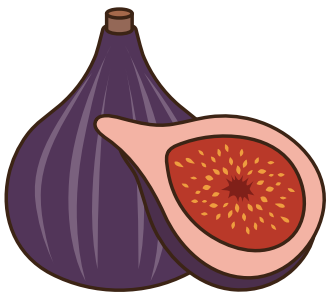
Class : \_\_\_\_\_

# CVC Words - Short i

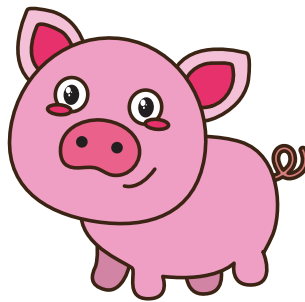
Find and write the words.

d	b	v	p	i	n
i	f	l	e	g	k
p	i	g	t	f	f
a	l	i	d	i	i
k	i	n	w	g	n

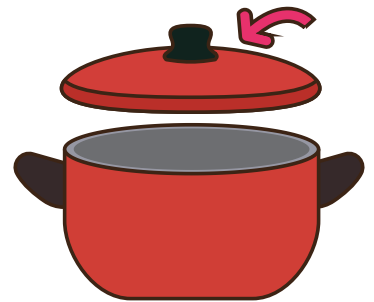
dip  
lid  
fig  
pig  
pin  
fin



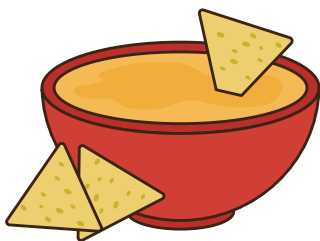
--	--	--



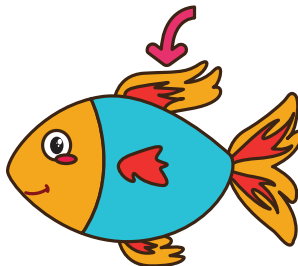
--	--	--



--	--	--



--	--	--



--	--	--



--	--	--



Name : .....

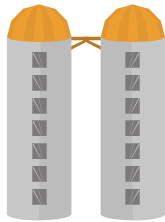
Class : .....

# Long "i" Sound

The letters "i", "igh", and "ie" can make the long "i" vowel sound. Categorize the words below according to the letters of the long "i" vowel sound.



pie



silo



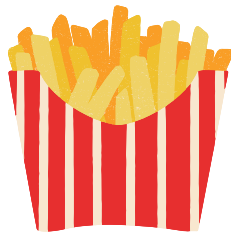
light



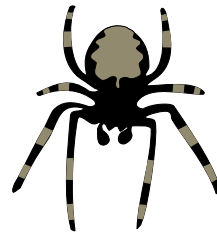
pilot



sight



fries



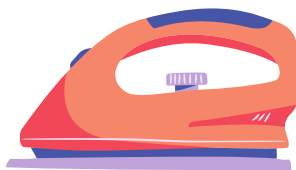
spider



night



bow tie



iron



die



knight

i

silo

igh

ie