



Name : _____

Class : _____

Instruction : Write ai or ay on the lines to complete the words.

Long A



tr__n



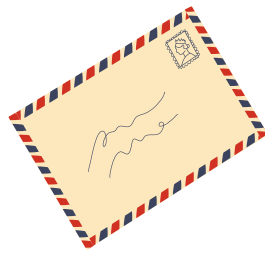
r__n



pr__



n__l



m__l



pl__



t__l



h__



p__nt



Name : _____

Class : _____

'SHORT A' AND 'LONG A' WORDS

'Short a' is the sound that we hear in a word like 'apple'.



'Long a' is the sound that we hear in a word like 'acorn'.









Sound out the words below, then write them in the correct box.

cat	cake	ate	alien	acorn
sat	apple	bat	ant	baby

'Short a' sound

'Long a' sound

Write the words next to the pictures as neatly as you can.



Name :

Class :

Instruction : Cut and paste the words in the correct column according to their sound.

Long a	Short a

 **rat**

 **cape**

 **lake**

 **map**

 **cap**

 **face**

 **cake**

 **hat**